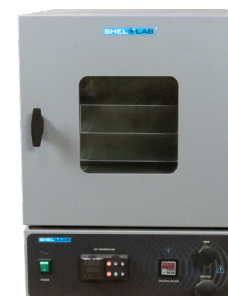


SVAC1

Vacuum Oven Spec Sheet

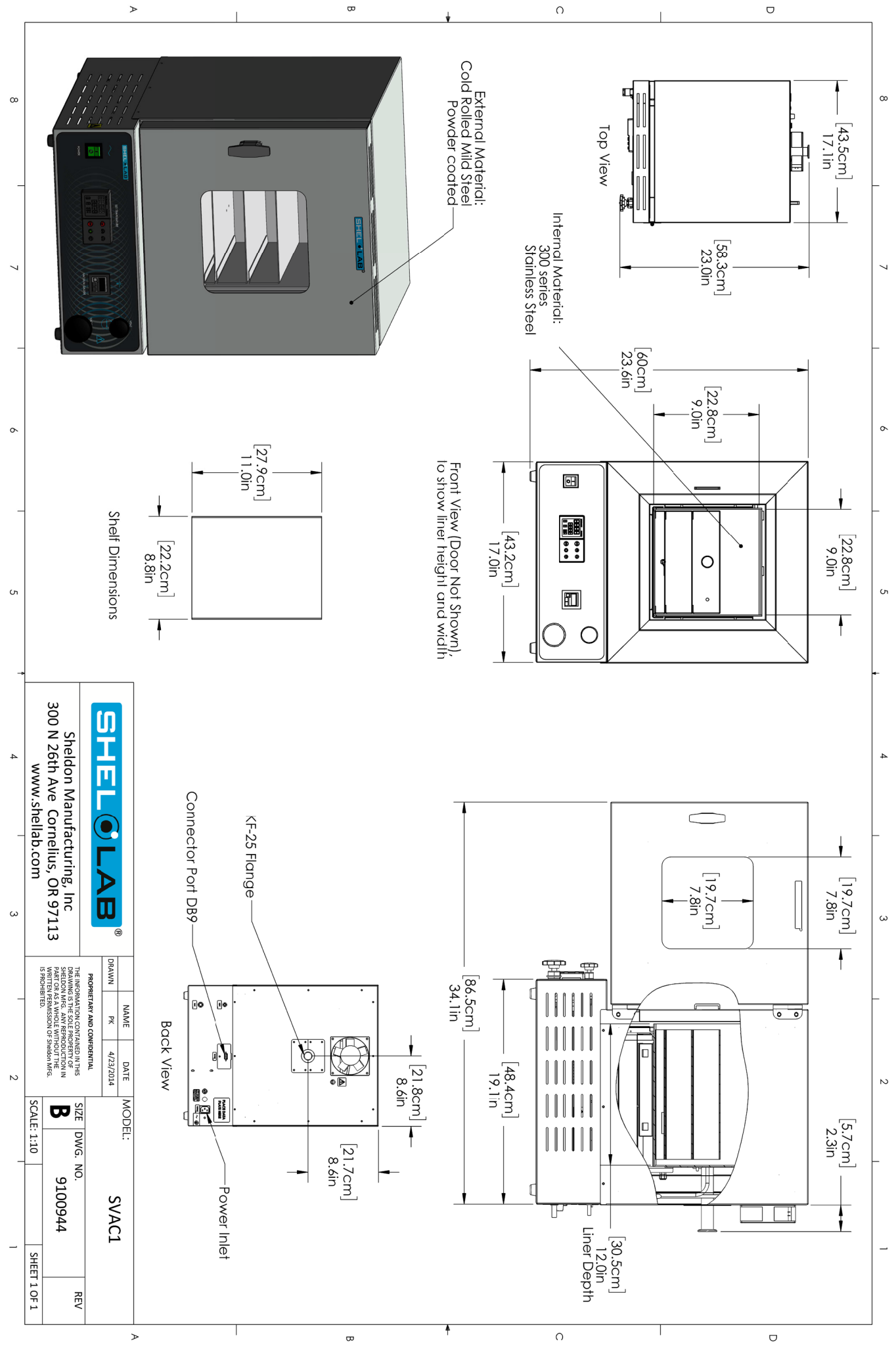


Model Name / Order Part ID	SVAC1 / SLV122
Exterior Dimensions (W x D x H)	17.5" x 23" x 23.7" 444 x 584 x 602 mm
Interior Dimensions (W x D x H)	9" x 12" x 9" 228 x 304 x 228 mm
Interior Volume	0.56 cu.ft. (15.9 liters)
Unit Weight	102 lb (47 kg)
Shipping Weight	156 lb (71 kg)
Interior Construction	300 Stainless Steel
Exterior Construction	Painted Cold Roll Steel
Standard Chamber Gasket	Silicone
Shelves	3 Included, 3 Max
Shelf Dimensions (W x D)	8.8" x 11" (223 x 279 mm)
Maximum Weight per Shelf	35 lb (15.8 kg)
Permitted Total Load	105 lb (47.6 kg)
Controls	EZ-ZONE Watlow
Access Port	KF-25
Vertical Clearance	12" (305 mm)
Wall Clearance, Each Side	6" (152 mm)
Wall Clearance, Rear	12" (305 mm)
Electrical Data	
Frequency	50/60Hz
Voltage	110V-120V
Power Current (Max Draw), Amps	7
Nominal Power (watts @150°C)	439
Plug Supplied	NEMA 5-15P
Energy Consumption (kWh/day)	
At 80°C	8.5
At 150°C	10.2
At 220°C	12.8
Temperature Data	
Heat-Up to Ambient — Minutes to 80°C	40
Heat-Up to Ambient — Minutes to 150°C	70
Heat-Up to Ambient — Minutes to 220°C	120
Temperature Range	10°C above ambient to 220°C
Temperature Stability	+/- 0.1°C @ 150°C
Operational Vacuum Range	-3.0 to -29.9 InHg
Vacuum Display Range	0-29.9 InHg
Misc.	
Warranty	2 Year Limited Warranty
Safety Certifications	UL 61010-1, EN 61010-1, CSA 61010-1, CE



Learn More About Sheldon Manufacturing
sales@sheldonmfg.com
sheldonmanufacturing.com
 (503) 640-3000





		Sheldon Manufacturing, Inc 300 N 26th Ave Cornelius, OR 97113 www.shellab.com	
		PROPRIETARY AND CONFIDENTIAL THE INFORMATION CONTAINED IN THIS DRAWING IS THE SOLE PROPERTY OF SHELDON MANUFACTURING, INC. IT IS TO BE USED AS A PART OF A WHOLE WITHOUT THE WRITTEN PERMISSION OF SHELDON MFG. © 2014	MODEL: SVAC1
DRAWN: PK NAME: SVAC1	DATE: 4/23/2014	SIZE: B DWG. NO.: 9100944	SCALE: 1:10 SHEET 1 OF 1