

SMO10HP-2

High-Performance Oven Spec Sheet



Model Name / Order Part ID	SMO10HP-2/ SLFHP1022-H
Capacity	10.6 cu.ft. (301 liters)
Interior Dimensions (W x D x H)	29.8" x 20.6" x 30.0" 757 x 524 x 762 mm
Exterior Dimensions (W x D x H)	44.1" x 29.9" x 56.7" 1121 x 760 x 1440 mm
Unit Weight	357 lb (163 kg)
Shipping Weight	450 lb (204 kg)
Shelves	3 standard, 8 max
Maximum Weight Per Shelf	75 lb (34kg)
Permitted Total Load	225 lb (102 kg)
Standard Door Gasket	Snap-In Fiberglass Door Gasket
Access Port	3" port (76.2 mm)
Controls	Watlow EZ-Zone
Warranty	2 Year Limited Warranty
Interior Construction	300 series stainless steel
Exterior Construction	Painted Cold Roll Steel
Vertical Clearance	24" (610 mm)
Wall Clearance, Each Side	6" (152 mm)
Wall Clearance, Rear	12" (305 mm)
Electrical, 50/60Hz, AC, 1Ø	
Voltage	220V-240V
Full Load Amps	26.0
Nominal Power (watts @150°C)	3528
Recommended Breaker, Amps	30
Power Connection Type	Direct Hardwire
Energy Consumption (kWh/day)	
At 80°C	47.9
At 150°C	82.1
At 306°C	130
Temperature Range 15°C above ambient to 306°C	
Heat-Up Time — Minutes to 80°C	N/A
Heat-Up Time — Minutes to 150°C	14
Heat-Up Time — Minutes to 306°C	N/A
Recovery after Door Opening (30 sec.) - Minutes to 80°C	3
Recovery after Door Opening (30 sec.) - Minutes to 150°C	3
Recovery after Door Opening (30 sec.) - Minutes to 306°C	6
Recovery after Door Opening (60 sec.) - Minutes to 80°C	5
Recovery after Door Opening (60 sec.) - Minutes to 150°C	6
Recovery after Door Opening (60 sec.) - Minutes to 306°C	10
Temperature Uniformity	
At 80°C	1.5
At 150°C	2.5
At 306°C	5.5
Air Flow Performance	
Air Changes Per Hr at Max	304
Flow Rate (CFM)	51

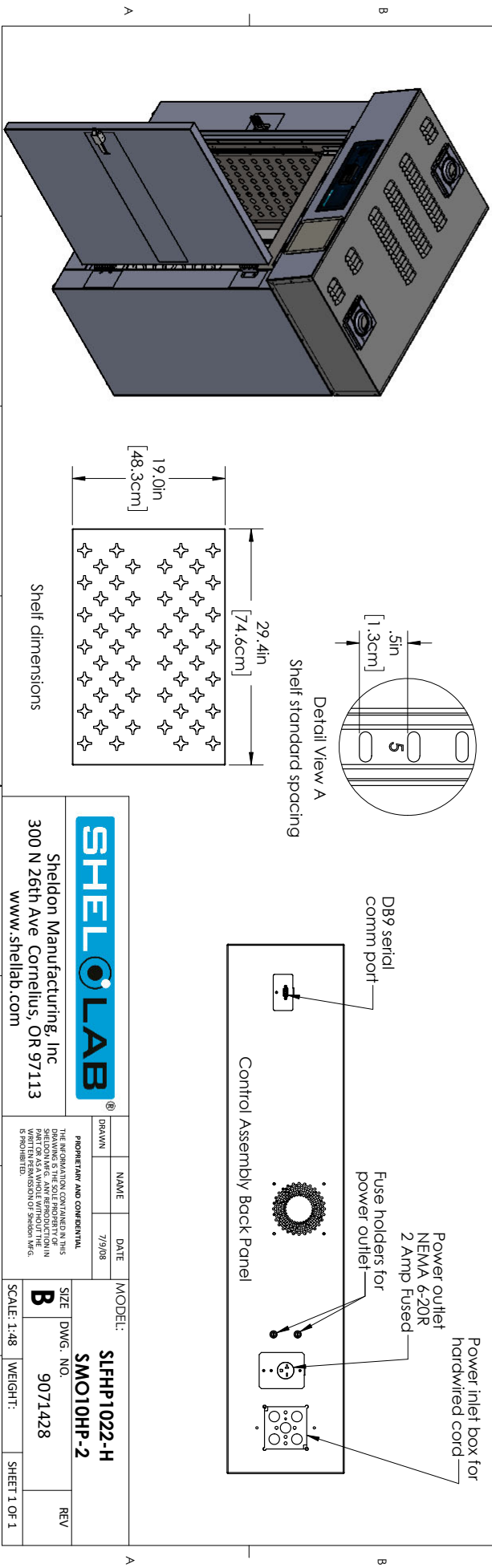
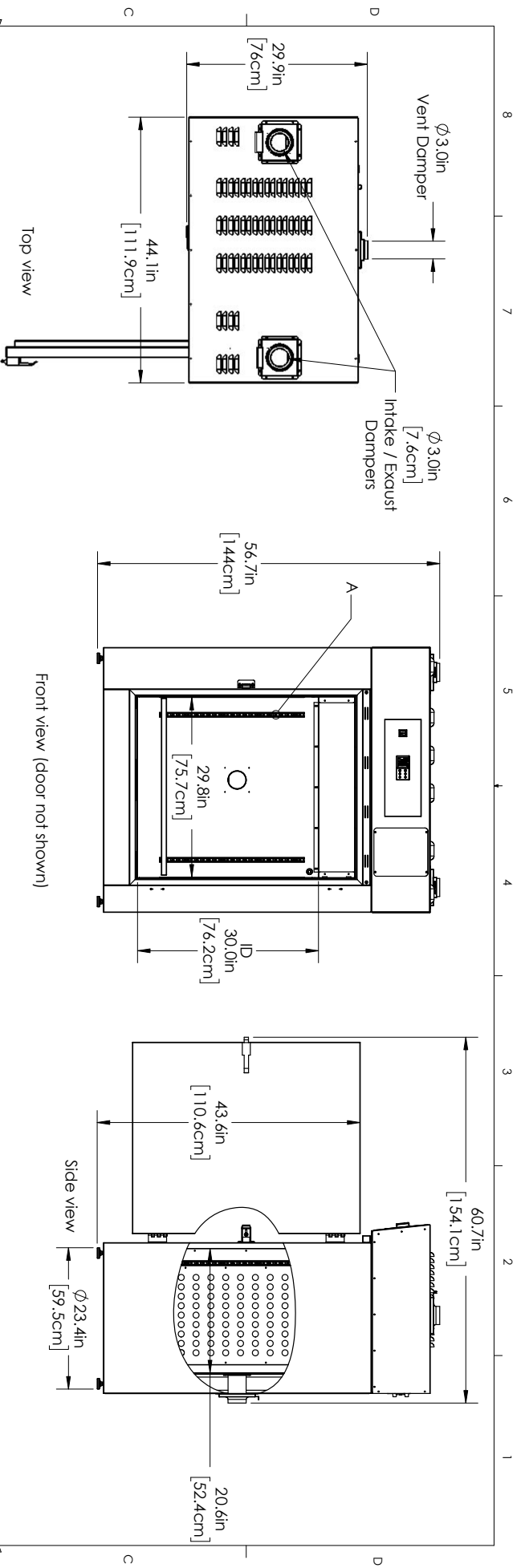


Learn More About Sheldon Manufacturing
sales@sheldonmfg.com
sheldonmanufacturing.com
 (503) 640-3000



We reserve the right to alter specifications at any time

SHEL LAB is a Sheldon Manufacturing Brand



		PROPRIETARY AND CONFIDENTIAL	MODEL:	SIFHP1022-H
		THE INFORMATION CONTAINED IN THIS DRAWING IS THE PROPERTY OF SHELL LAB. IT IS TO BE USED ONLY FOR THE PROJECT AND LOCATION SPECIFICALLY IDENTIFIED HEREIN. ANY REPRODUCTION OR TRANSMISSION IN ANY FORM OR BY ANY MEANS WITHOUT THE WRITTEN PERMISSION OF SHELL LAB IS PROHIBITED.	DATE:	7/9/08
Sheldon Manufacturing, Inc 300 N 26th Ave. Cornelius, OR 97113 www.shellab.com		NAME:	SIZE:	REV:
		DATE:	B	9071428
		SCALE:	1:48	WEIGHT:
				SHEET 1 OF 1