

# SMI6 Microbiological Incubator



Model Name / Order Part ID	SMI6/SLM622
Capacity	5.9 cu.ft. (166 liters)
Interior Dimensions (W x D x H)	19.5" x 20.0" x 26.0" 495 x 508 x 660 mm
Exterior Dimensions (W x D x H)	25.3" x 27.3" x 38.0" 643 x 693 x 965 mm
Unit Weight	158 lb (71.7 kg)
Shipping Weight	183 lb (83 kg)
Shelves	3 standard, 12 max
Maximum Weight Per Shelf	35 lb (15.9 kgs)
Permitted Total Load	105 lb (47.6 kg)
Standard Door Gasket	Vinyl
Access Port	1
Controls	Digital
Warranty	2 Year Warranty
Interior Construction	430 Stainless Steel
Exterior Construction	Painted Cold Roll Steel
Vertical Clearance	2" (51 mm)
Wall Clearance, Each Side	4" (102 mm)
Wall Clearance, Rear	4" (102 mm)



## Electrical

Electrical Supply /Hz, AC, 1Ø	50/60 Hz, 100-120 AC, 6.0 Amps
Nominal Power (watts @ 37°C)	137
Plug Supplied	NEMA 5-15P
Energy Consumption (kWh/day) - At 37°C	3.2

## Temperature Range Ambient +8°C to 70°C

Recovery after Door Opening (30 sec.) - Minutes to 37°C	5.0
Recovery after Door Opening (60 sec.) - Minutes to 37°C	6.0

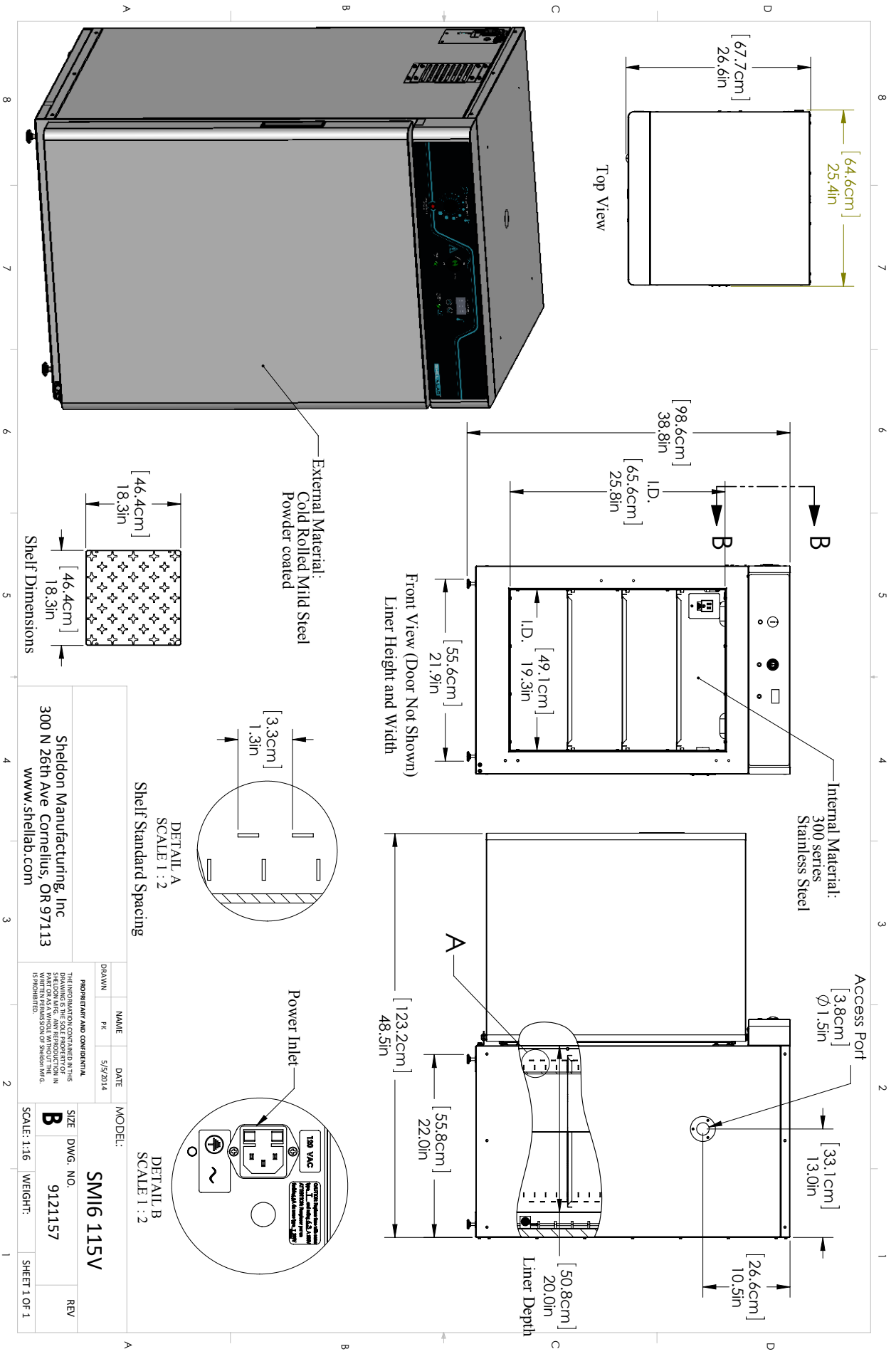
## Temperature Uniformity

At 37°C	0.5
---------	-----



Learn More About Sheldon Manufacturing  
[sales@sheldonmfg.com](mailto:sales@sheldonmfg.com)  
[sheldonmanufacturing.com](http://sheldonmanufacturing.com)  
 (503) 640-3000





Sheldon Manufacturing, Inc 300 N 26th Ave Cornelius, OR 97113 www.shellab.com		PROPRIETARY AND CONFIDENTIAL THE INFORMATION CONTAINED IN THIS DRAWING IS THE SOLE PROPERTY OF SHELDON MANUFACTURING, INC. AND IS TO BE USED ONLY FOR THE PROJECT AND FOR THE CLIENT'S USE. WITHOUT THE WRITTEN PERMISSION OF Sheldon MFG, NO REPRODUCTION IS ALLOWED.	
DRAWN NAME PK	DATE 5/5/2014	MODEL: <b>SM16 115V</b>	SIZE DWG. NO. <b>9121157</b>
SHEET 1 OF 1		SCALE: 1:16 WEIGHT:	